



**STEM SCHOOL**

**HIGHLANDS RANCH**

*Never Stop Innovating*

# **Back-to-School Parent Info Session**

**Topic: Driveline and PikMyKid**

# Presentation Agenda

- Why do we have Drivelines?
- Walkers and Bike Riders
- West Driveline - Morning Drop-Off
- West Driveline - Afternoon Pick-Up
- East Driveline - Morning Drop-Off
- East Driveline - Afternoon Pick-Up

# Why do we Have a Driveline?

Driveline is a **REQUIREMENT** of our Transportation Management Plan, which is a **REQUIREMENT** for us to maintain our Charter Contract with Douglas County School District.

Following all the guidelines and procedures is really important in order for us to have a successful school year.

***Let's be good neighbors!***

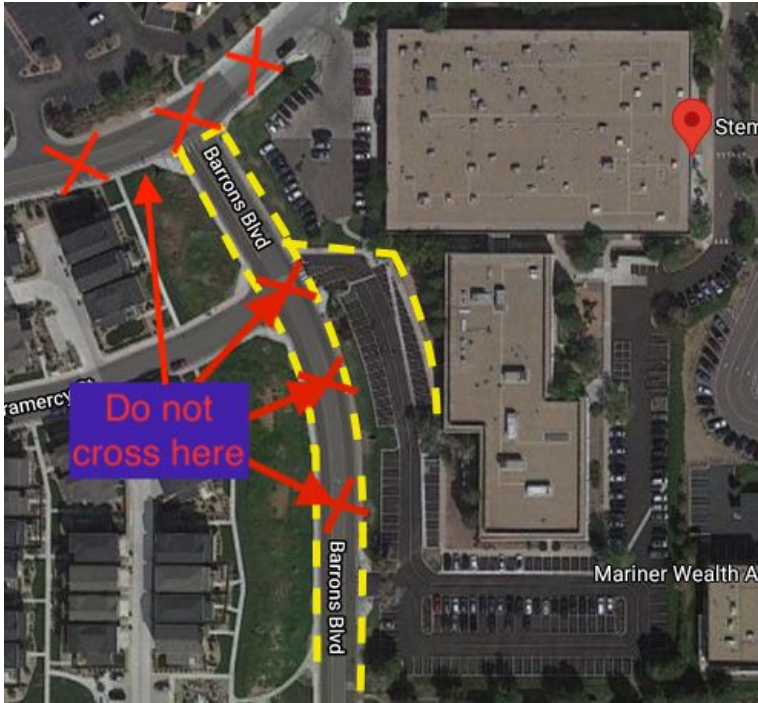
# Walkers and Bike Riders

## Mornings

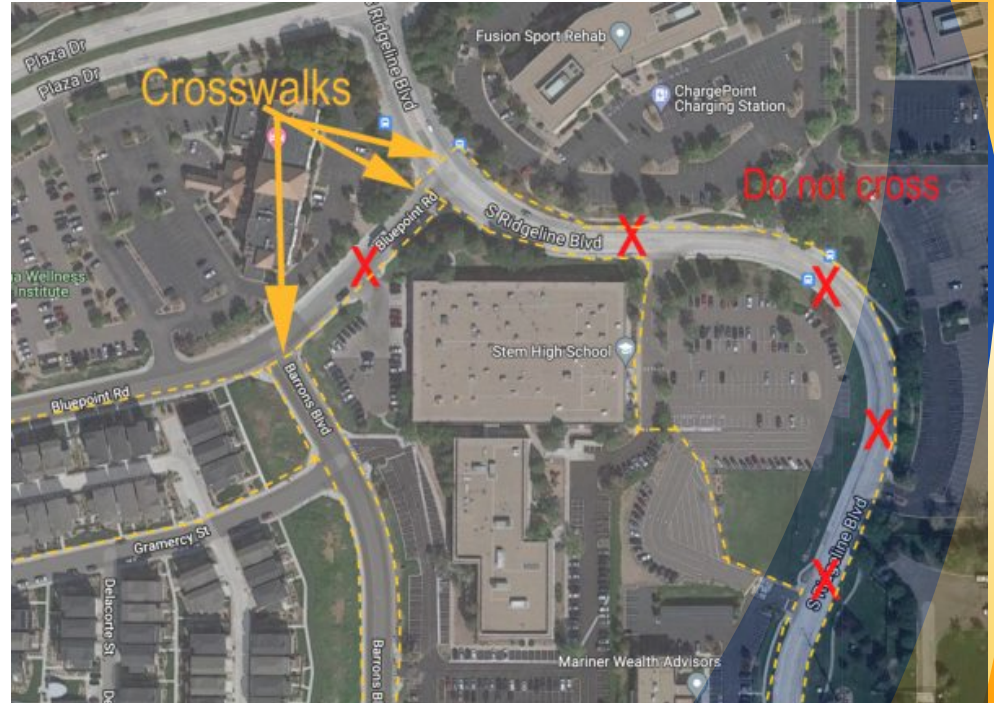
- Please use crosswalks at all times to access our campus. Crossing where there is no crosswalks is unsafe and leads to accidents and driveline delays.
- Do Not:
  - Pullover on the side of the road to let your students out
  - Park in a business and walk over
  - Cross where there is no crosswalk

# Walkers and Bike Riders

West Access



East Access



# Walkers and Bike Riders

## Afternoon

- Elementary Walker Pick-Up is on the East side of the Elementary Building by the playground.
  - Use PikMyKid to announce
  - Do not park in the surrounding businesses (they will tow and ticket)
- Secondary Walkers will exit the East side of the Secondary Building and can leave campus
  - Must use appropriate sidewalks and crosswalks.

# Walkers and Bike Riders

- Bike Racks are located on the East side of the campus, by the Secondary Entrance.
- All students must use a lock to secure their bike.
- STEM is not responsible for bikes being stolen or missing.

# STEM Drivelines

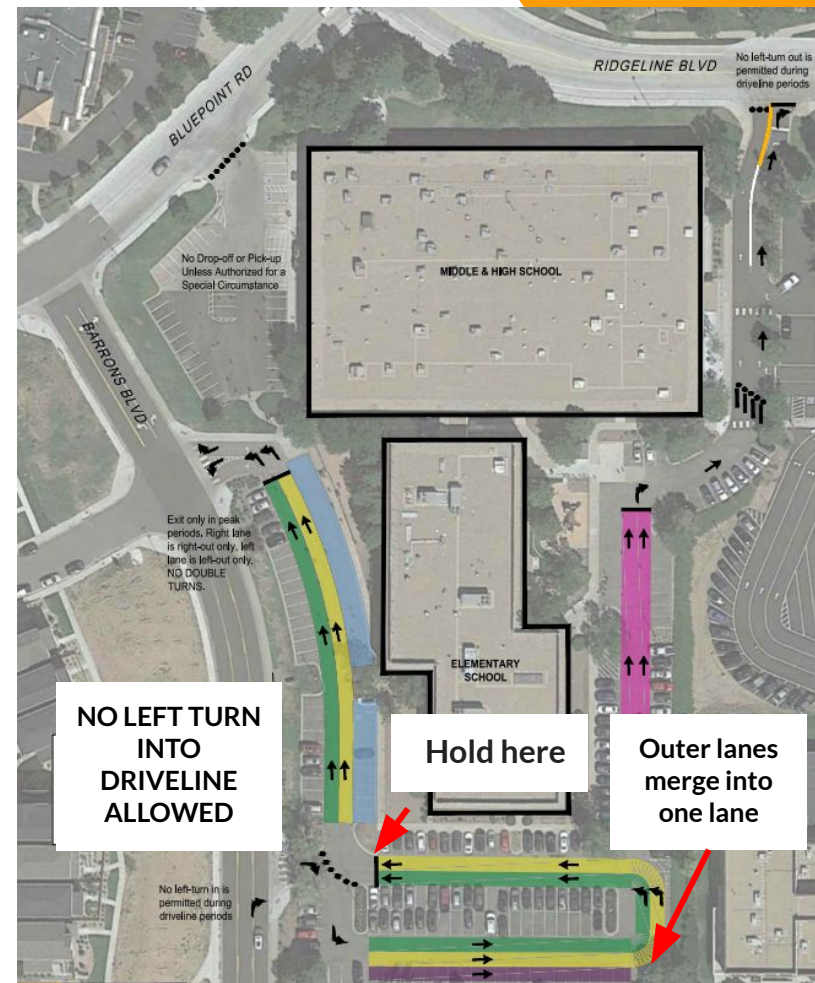
We have two Drivelines:

- Elementary (West) Driveline & Walkers
  - The West Driveline is for Elementary students and Elementary students with Secondary Siblings.
  - Families use this loop for drop-off and pick-up
- Secondary (East Driveline) and Walkers
  - The East Driveline is for Secondary students only.
  - No Elementary students can be picked up from the East Driveline
  - Families use this loop for drop-off and pick-up



# West Driveline - Morning

- Driveline opens at 7:10 a.m. and closes at 7:45 a.m. Students arriving after 7:45 a.m. will need to be signed-in at the front desk by their parent
- Cars enter parking lot by turning RIGHT from Barrons at their designated drop-off time.
  - **Only staff with a staff parking pass can make a left turn into the parking lot.**
- Cars will form 3 lines as they enter
- The outer two lanes merge into one during driveline.



# West Driveline - Morning

- If you are dropping off a Secondary student with your Elementary student, they will go into Before School Care that is run through our Enrichment programming.
- They can access the Middle School Cafeteria starting as early as 7:20 a.m. and will be released to classrooms after 7:30 a.m.

# West Driveline - Morning

## Tips for the driveline

- Proceed as far forward as you can so that we can stack cars in the parking lot.
- Stay in your lane – No Passing.
- Cars will exit on Barrons. The Left lane will turn Left onto Barrons and the Right lane will turn Right. No changing lanes.
- Please do not drive straight across Barrons Blvd!
- Stay off your phone.

# West Driveline Afternoon Pick-Up Times

<u>Pick-up Time Window</u>	<u>Color</u>	<u>West ES Loop</u>
2:20-2:30 p.m.	Green	Kinder – 1st
2:30-2:40 p.m.	Orange	2nd – 5th K-1 with ES siblings
2:55-3 p.m.	Yellow	K-5th with MH/HS siblings

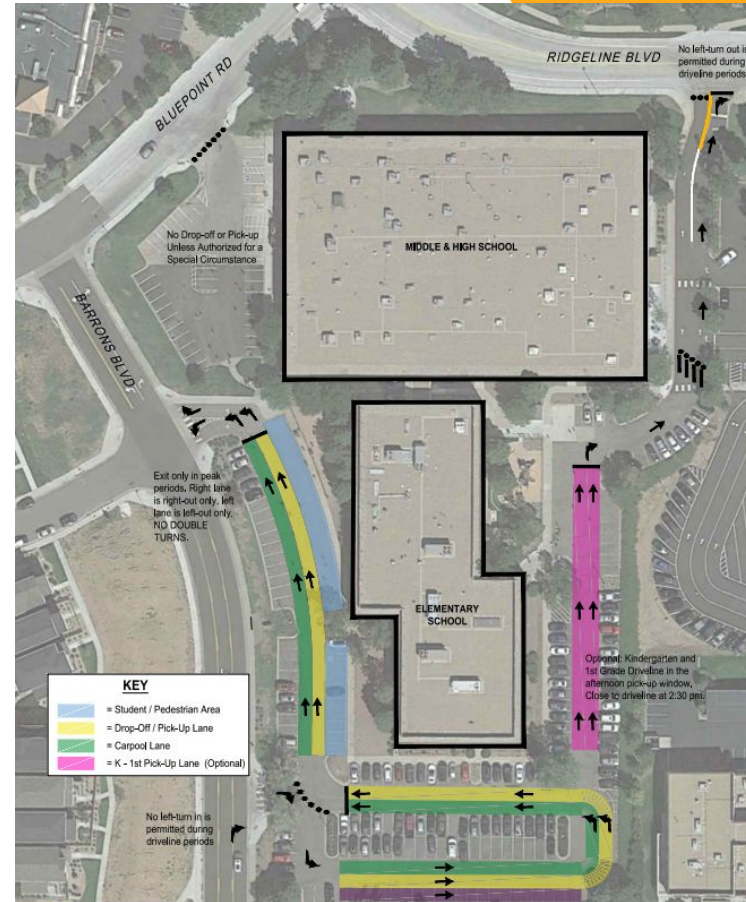
Driveline will open at 2:15 p.m. for Green Placard Cars ONLY. If you have any other color, please enter at your designated time.

# West Driveline - Afternoon

- Every car needs a placard for Afternoon Dismissal
  - Placards will be pre-pre-printed at the start of the school year.
  - Need placard mid year? Email [support@stemk12.org](mailto:support@stemk12.org).
- Placards must be displayed throughout the entire Afternoon Dismissal process (please leave displayed until you leave the parking lot).
- Must use the PikMyKid Dismissal App

# West Driveline - Afternoon

- Cars enter parking lot by turning RIGHT from Barrons at their designated pick-up time.
  - **No left turn into driveline from Barrons Blvd.**
  - Cars should not enter driveline prior to their pick-up time.
  - Cars are not allowed to park/stand on Barrons Blvd. If it is not your time, you will have to circle and come back when it is your time.
- Cars will form 3 lines as they enter
- The outer two lanes merge into one during driveline.



# West Driveline - Afternoon

- Once you can safely do so, announce that you've arrived via the PikMyKid app.
- An attendant will come through the Driveline lanes to put the cars in order in the system.
- Displaying your placard helps to speed up this process.
- Obey all directions given by Driveline Attendants.
- Once in the Loading area (Front of Elementary School Building), attendants will help load students (depending on grade) and then dismiss students in PikMyKid.
- Cars will be directed to exit in 2 lanes, the Right lane will turn Right on Barrons and the Left lane will turn Left on Barrons. No lane changing.

# PikMyKid



- All parents must download and use PikMyKid Parent App (car riders and walkers)
- All changes to pick-up modes must be done by 2 p.m. each day in the App.
- Families can delegate another person to pick up their student using the App.
  - The Delegated person needs to use PikMyKid
  - If someone else is coming to get your student and they do not have the app, we will not be able to release your student to them. This is a security measure.
- Need help? Visit <http://stemk12.org/parents/get-informed/stem-driveline/pikmykid-dismissal-app/>



# What Slows Down Driveline in the Afternoon

- Not paying attention
- Not using the App; not having the delegation, pick-up mode or not announcing.
- Not having your placard displayed
- Coming at the wrong time
- Students not being ready to go; leaving things in classrooms
- Not having enough staff/volunteers to assist.
- Technology/wifi not working
- Weather

# West Driveline Don'ts!

- Parking in the neighborhood across the street is ok as long as you are on the City street and not blocking driveways or garages.
  - You may receive a traffic ticket or get towed
- Please cross the street at the Crosswalk at Barrons and Bluepoint.
- NO STOPPING on Barrons Blvd to drop-off or pick up your student.
- Don't be on your phone
- Don't speed

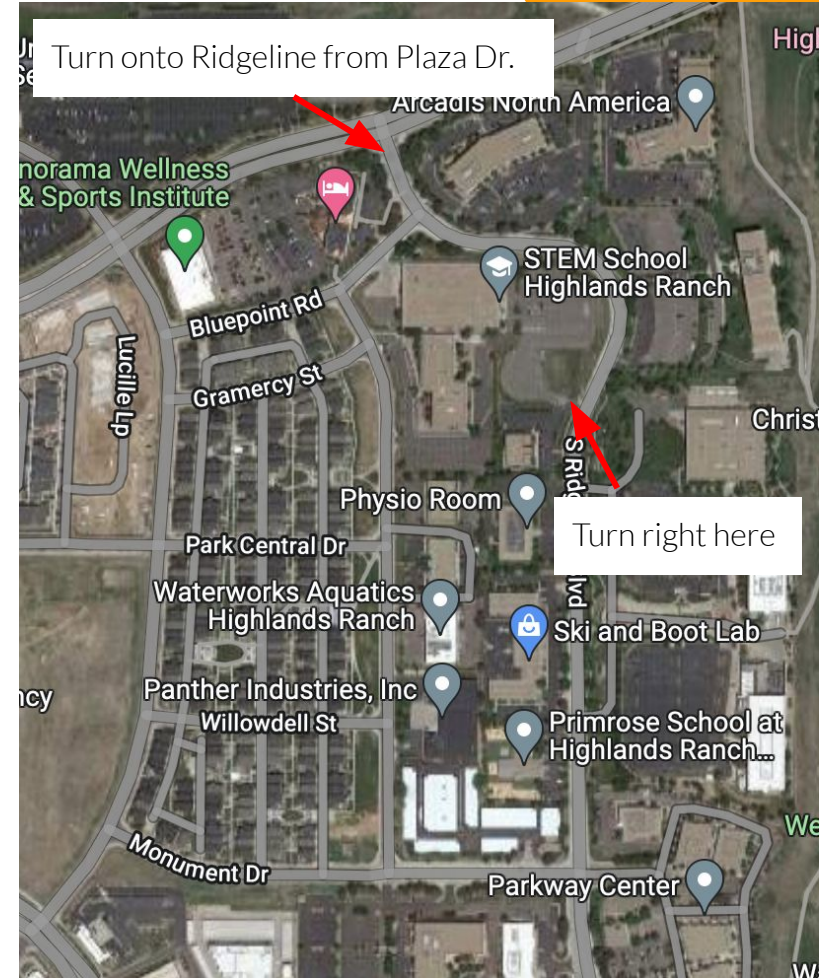


# West Driveline Dos!

- Use the PikMyKid App
- Follow all instructions from our SRO, Security Manager and Driveline Attendants
- Display your placard!
- Ask questions if you need help in advance of entering driveline

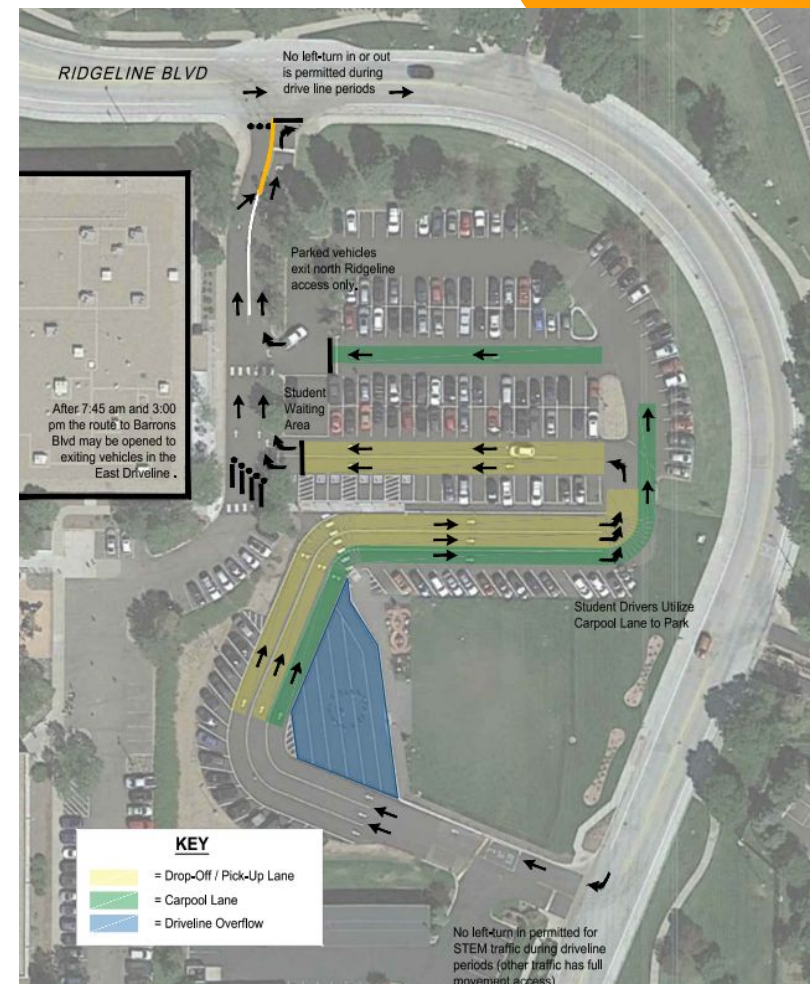
# East Driveline - Morning

- Driveline opens at 7:30 a.m. Students arriving after 7:50 a.m. will need to sign-in at the front.
- Approaching the campus:
  - From the North: turn onto Ridgeline and follow traffic around the East side of the campus to turn right into the parking lot.
  - If you come from the West, please access the driveline via Ridgeline
  - Please do not access the Secondary Driveline from the South on Ridgeline.
    - **NO LEFT TURN INTO DRIVELINE ALLOWED**
  - **Only staff with a staff parking pass can make a left turn into the parking lot.**



# East Driveline - Morning

- Once you enter the Driveline, stay in your lane (do not change lanes)
- Pull forward as far as you can to allow for more cars to stack behind you.
- Left Lanes (2) are designated for middle and high school driveline
- Right Lane is designated for Carpool and High School Drivers





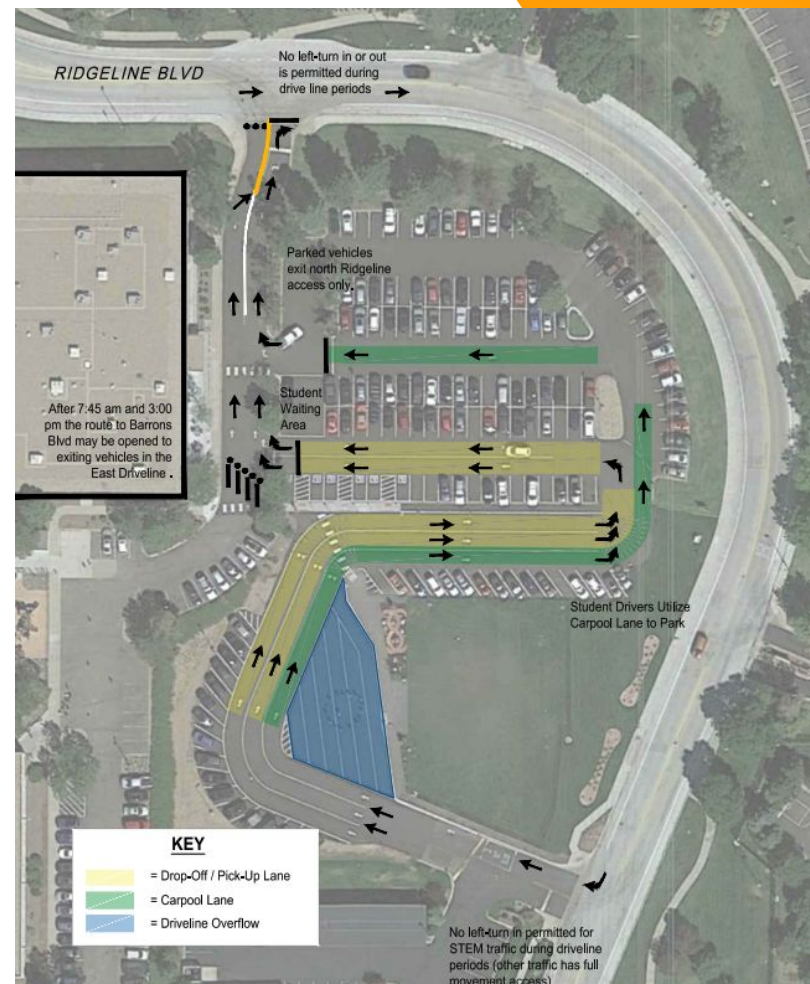
# East Driveline - Morning

- Stop and Wait until all vehicles around you have come to a complete stop and the attendant directs students to exit the vehicles
- Drop-off in designated area
- Carpool is located in the middle parking aisle
- Driveline is located in south parking aisle



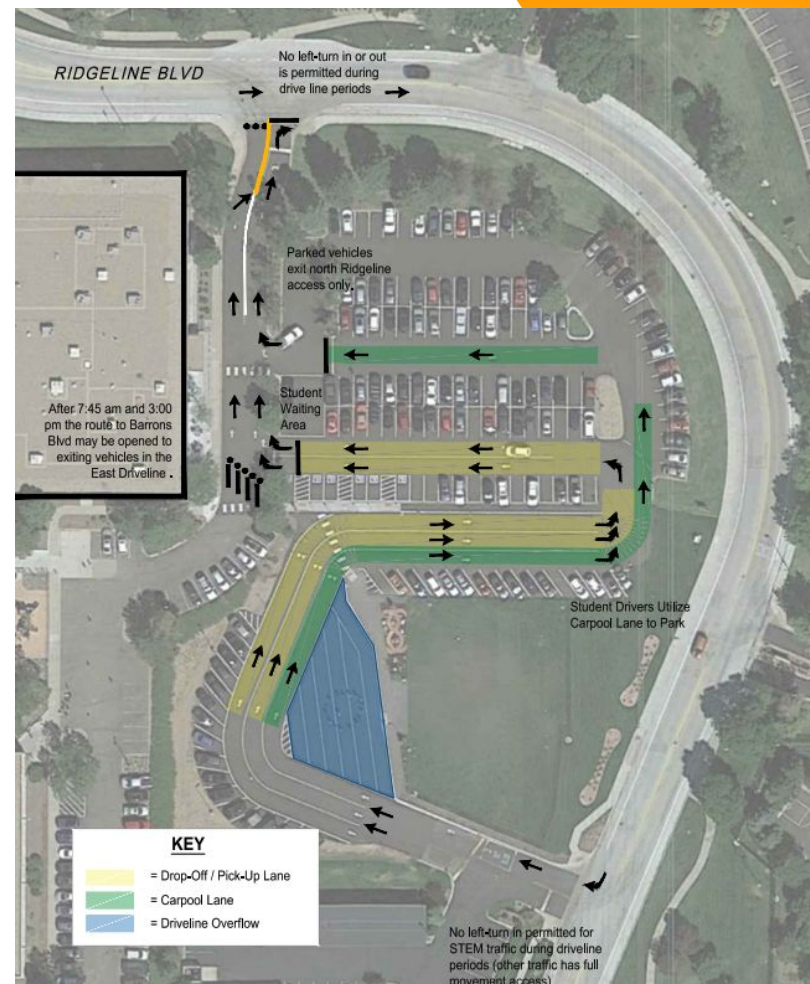
# East Driveline - Morning

- Once unloaded, driveline attendants will direct drivers to exit the driveline by making a right onto Ridgeline (no left allowed).
- Drivers will merge into traffic that is circulating so we ask that everyone takes turns to allow for cars to exit.



# East Driveline - Morning

- High School Drivers: HS drivers (displaying a STEM-issued HS Parking Pass) will enter using the carpool express lane to park in the High School Parking Lot (located in front of the Middle School).
- MS Crosswalk: Between Driveline groups, a parking attendant will direct students across the crosswalk at the Middle School Entrance.



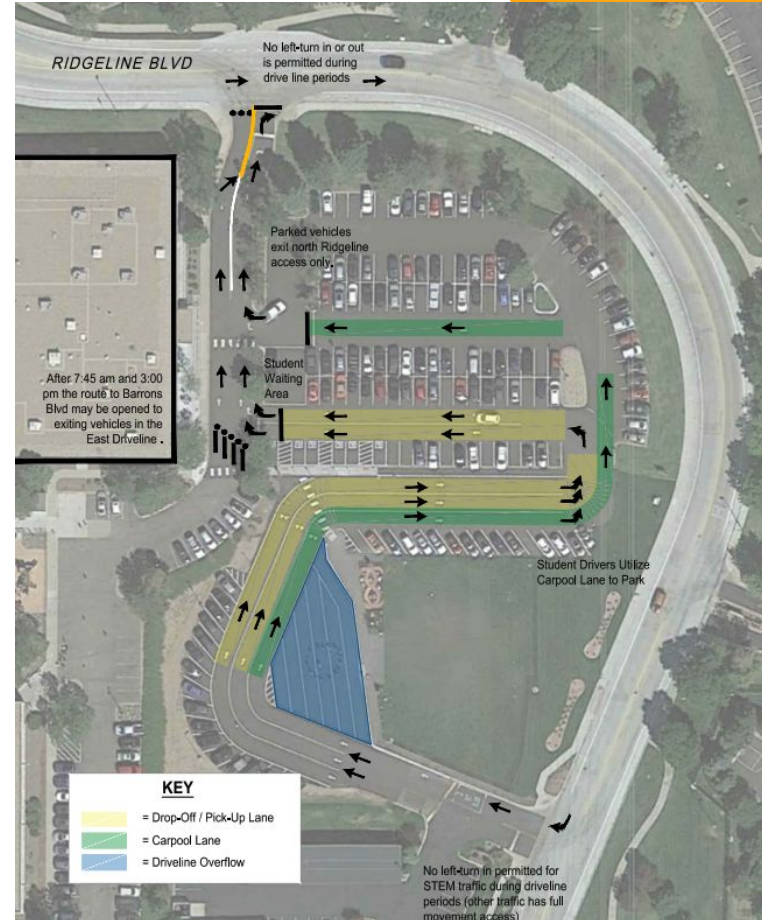


# East Driveline Pick-Up Times

- 2:55-3:05 p.m. - **PINK** Placard
- 3:05-3:15 p.m. - **BLUE** Placard
- Carpool tags will be either Pink or Blue with a Carpool sticker on it
- Do not enter prior to your pick-up time.

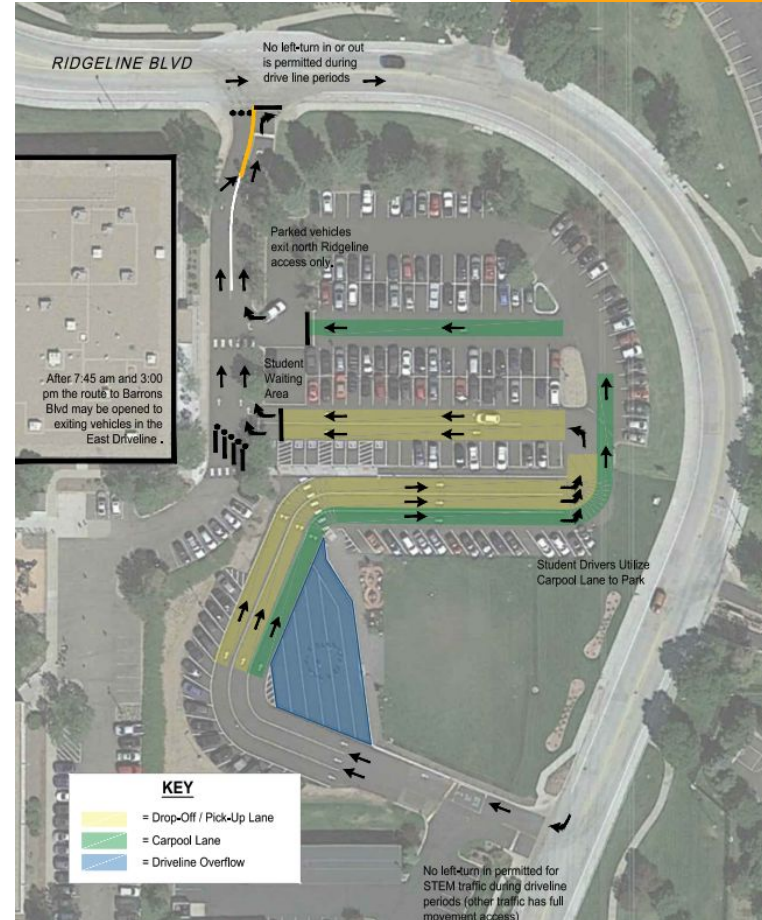
# East Driveline - Afternoon

- Follow the same process as morning drop-off
- Circulate the internal roadway and parking area as directed
  - Right Lane is designated for Carpool
  - Left Lanes (2) are designated for middle and high school driveline
- Pull forward as much as you can to allow for more cars to stack behind you.



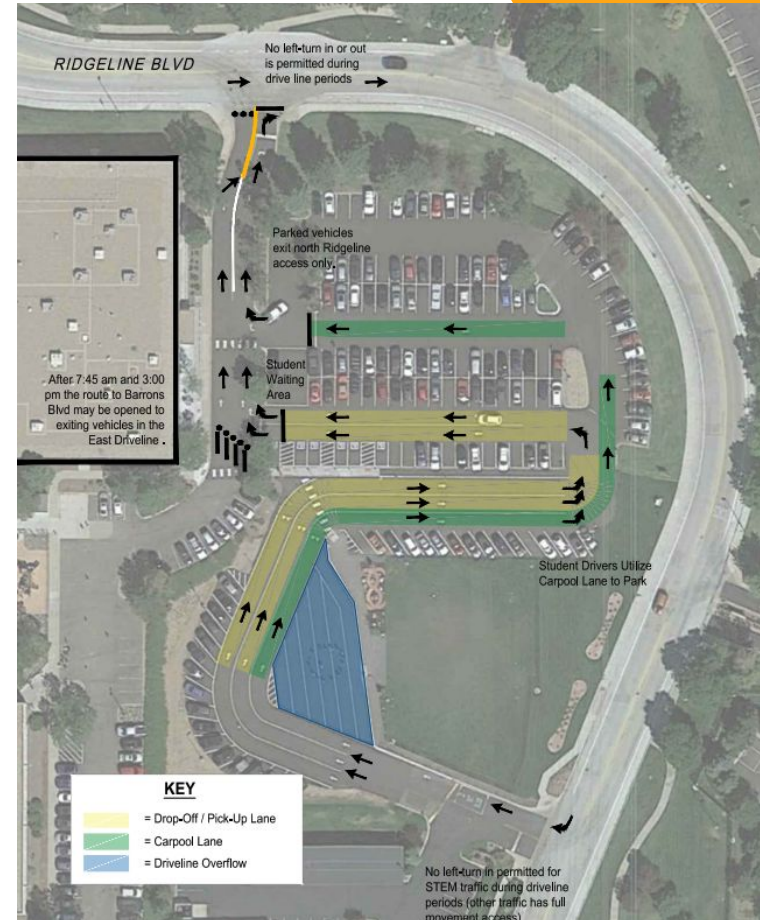
# East Driveline - Afternoon

- Stop and Wait in the Pick-Up area until all vehicles around you have come to a complete stop and the attendant directs students to enter the vehicles
- Pick-up in the designated area
  - Carpool is located in the middle parking aisle
  - Driveline is located in south parking aisle



# East Driveline - Afternoon

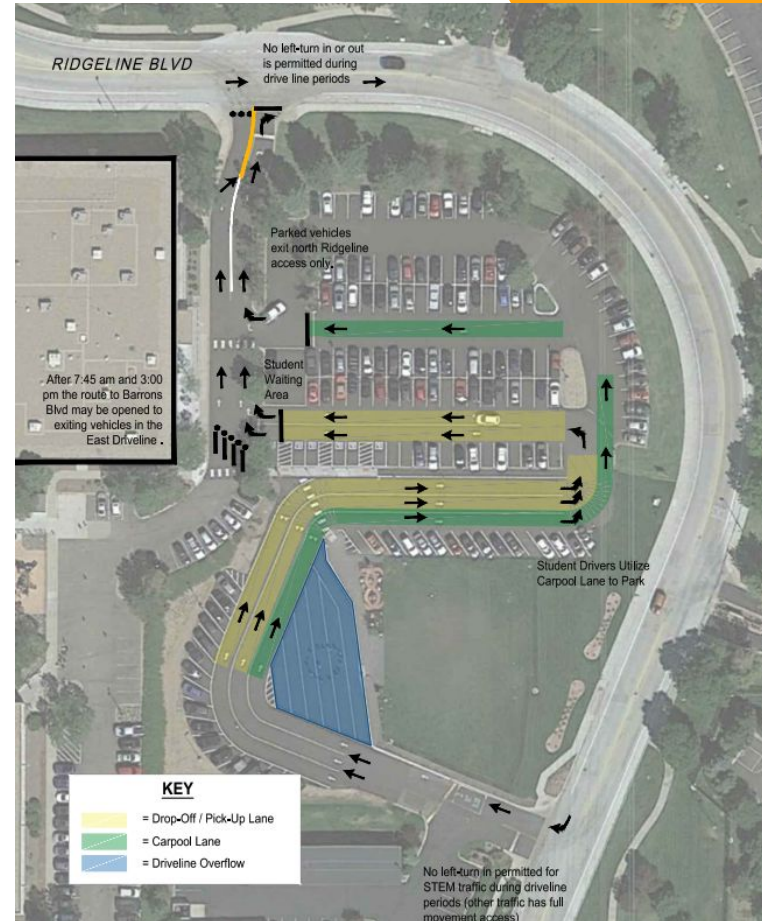
- Once loaded, driveline attendants direct drivers to exit the driveline by making a right onto Ridgeline (no left allowed).
- Drivers will merge into traffic that is circulating so we ask that everyone takes turns to allow for cars to exit.





# East Driveline - Afternoon

- Bikers and Walkers will be released at dismissal and must cross at designated crosswalks.
- High School Drivers: HS drivers will merge into the driveline once directed by an attendant.



# East Driveline Don'ts!

- Parking in the businesses across the street is NOT OK.
  - You could get ticketed and towed.
  - Violates our Transportation Management Plan
- NO STOPPING on Ridgeline Blvd to drop-off or pick up your student.
- Don't be on your phone
- Don't speed

# East Driveline Dos!

- Follow all instructions from our SRO, Security Manager and Driveline Attendants
- Display your placard!
- Ask questions if you need help before you enter driveline.

# East Driveline

- Secondary Students Only and Secondary Carpool Program
- Every car needs a placard for Afternoon Dismissal
  - 2:55-3:05 p.m. - **PINK** Placard
  - 3:05-3:15 p.m. - **BLUE** Placard
  - Sign-up for a timeslot via the Secondary Driveline Placard Sign-Up at:  
<https://www.signupgenius.com/go/8050b45a8ab29a1fb6-2022231#/>
- Need placard mid year? Email [support@stemk12.org](mailto:support@stemk12.org).
- Placards must be displayed throughout the Afternoon Dismissal process.



# Secondary Carpool Program

- There is a carpool “express” lane in the East (Secondary) Driveline Loop.
- Carpools (meaning three or more students, or three or more families riding together) will need to obtain a carpool sticker to use the carpool lane.
- The school has partnered with “Way To Go: School Pool” to help families find carpool groups.
  - Secure link: <https://mywaytogo.org/s/schoolpool-stemsch-hr2187>
- Once you register through Way To Go and have your carpool, request your Carpool Placard here: <https://forms.gle/daMp5oaERYf7xQdD7>

# Secondary Carpool Program



Find out more about  
WayToGo here:

<https://mywaytogo.org/#/>

# Placard Pick-Up Dates/Times

- What to Expect:
  - We'll print all placards on site
  - Learn more about PikMyKid
  - Learn more about Way to Go School Pool
- Wednesday, Aug. 2, from 7:30 a.m. to 2 p.m. in the Secondary Commons.
  - Please use the Athletics Entrance
- Thursday, Aug. 3, from 1-5 p.m. in the Secondary Commons
  - Please use the Athletics Entrance
- Monday, Aug. 7, from 8:30 a.m. to 2:30 p.m.
  - Elementary Placards will be in the Elementary Front Office
  - Secondary will be in the Secondary Front Office

**Questions?**

The background features a white upper section and a lower section with wavy, overlapping shapes in orange and blue. The orange shapes are on the left and bottom, while the blue shape is on the right and top.